

**IMPORTANT NOTE:**

Locate the Specification Label on unit to determine exact Model Name and electrical specifications. This information is needed to identify the correct replacement parts. See exploded view illustration(s) for Specification Label location.

CAUTION

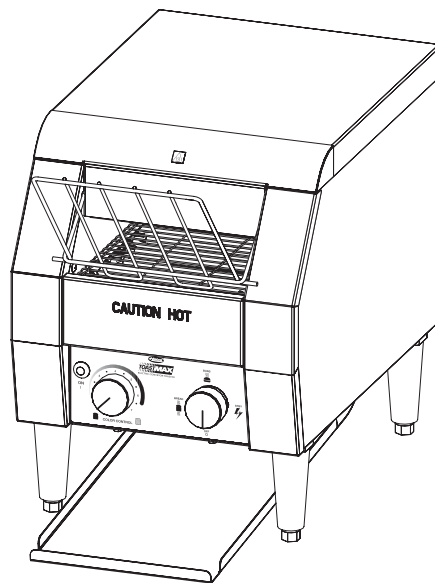
Use of replacement parts other than those supplied by Hatco Corporation may result in damage to unit or injury to personnel and will void all warranties.

TOASTMAX®

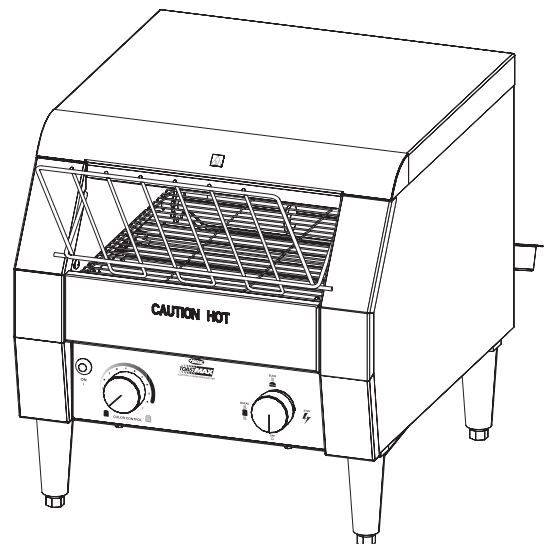
Electric Conveyor Toasters

TM Series

<u>Model Name</u>	<u>Page(s)</u>	<u>Model Name</u>	<u>Page(s)</u>
TM-5	3	TM-10	3,5
TM-5H.....	3,4	TM-10H.....	3,6
		TM-10H-230-SEABS	3,7

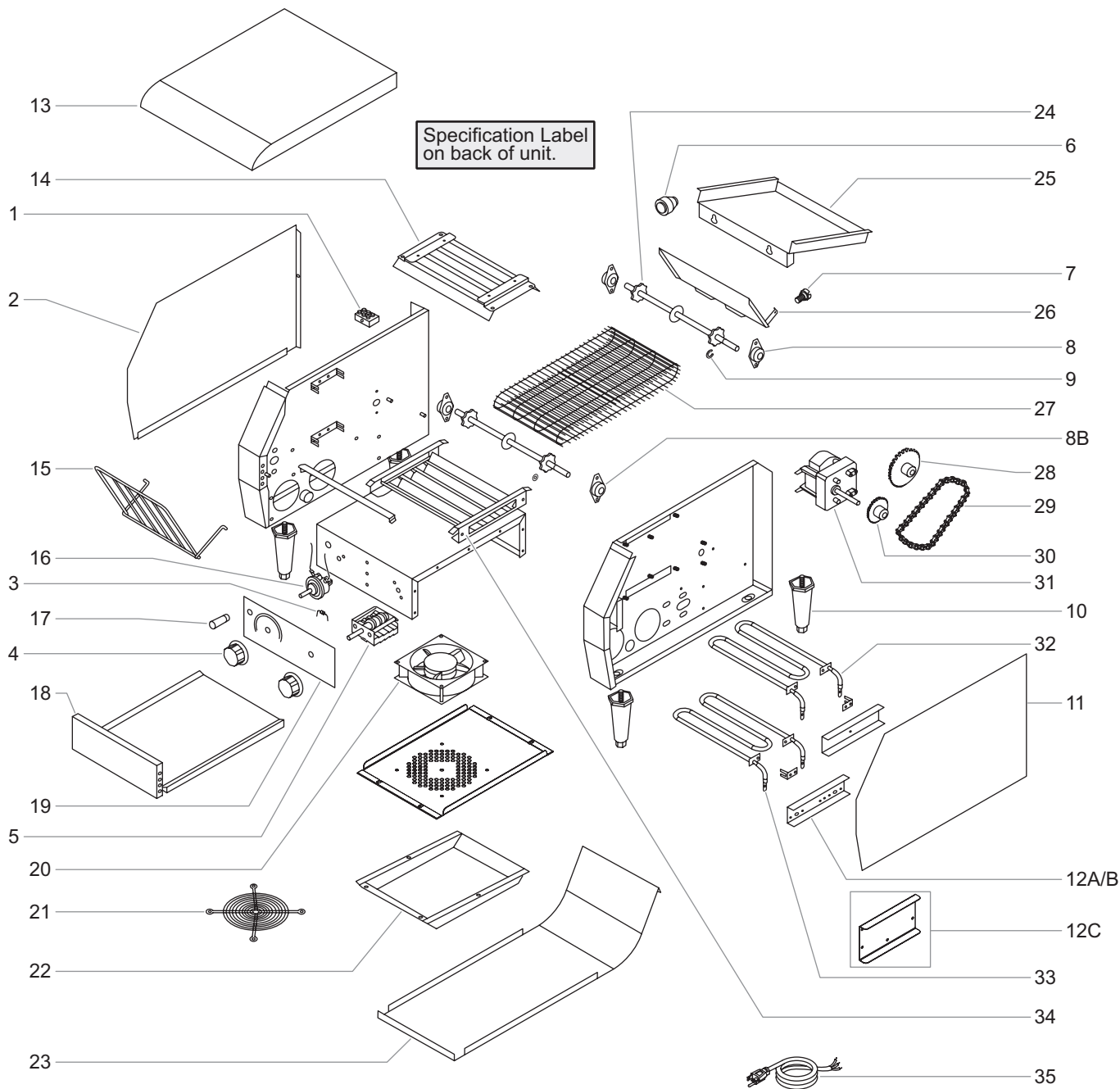
**IMPORTANT NOTE:**

See page 2 for important information on how to use this Replacement Parts List.



Replacement Parts List

Hatco TOASTMAX® Conveyor Toasters TM Series



IMPORTANT! — HOW TO USE THIS REPLACEMENT PARTS LIST

This Replacement Parts List represents toasters built before and after manufacturing and part number changes. Toasters with a manufacturing date code of 0830 and older use **Item** numbers with the "A" suffix. Toasters with a manufacturing date code between 0831 and 1135 use **Item** numbers with the "B" suffix. Toasters with a manufacturing date code of 1136 and newer use **Item** numbers with the "C" suffix. **Item** numbers that are not broken down with "A", "B", or "C" suffixes are the same for all manufacturing date codes.

NOTE: The last four digits in a ten digit numerical serial number are the manufacturing date code.

Example: Serial number 962506**2231** has a date code of "2231" which indicates the following: **2231**

Week Thirty-One
Year 2022

Parts Common to All TM Series Models

Item	Description	Part No.	Qty.
1A	Terminal Block — 3 Pole	X02.15.052.00	1
1B/C	Terminal Block — 3 Pole	02.15.050.00	1
2A	Side Panel (LH)	X04.05.436.00	1
2B/C	Side Panel (LH)	04.05.564.00	1
3A	Diode	X02.40.046.00	1
3B/C	None (included with item 17B)	---	
4A	Control Knob	X05.30.093.00	2
4B/C	Control Knob	05.30.020.00	2
5	Selector Switch	02.19.174.00	1
6	Cord Grip	02.20.502.00	1

Item	Description	Part No.	Qty.
7A	Thumbscrew	X05.04.488.00	2
7B/C	Thumbscrew	05.04.371.00	2
8A	Bearing Assembly, Front and Rear	X05.02.024.00	4
8B/C	Bearing Assembly, Rear	04.56.854.00	2
	Bearing Assembly, Front	04.56.855.00	2
9	Retaining Ring	05.11.035.00	1
10	Leg, 10 cm (4")	05.30.007.00	4
11A	Side Panel (RH)	X04.05.437.00	1
11B/C	Side Panel (RH)	04.05.563.00	1

Parts Specific to Model TM-5

Item	Description	100 V 50 Hz	120 V 60 Hz	220–240 V (CE) 50 Hz
12A	Bracket, Element (Qty. 2)	---	---	---
12B	Bracket, Element	---	---	04.05.575.00
12C	Bracket, Element, Top ‡	---	---	04.05.747.00
13A	Top Cover w/Insulation	---	---	---
13B/C	Top Cover w/Insulation	---	---	R04.05.562.00
14	Reflector, Upper Element	---	---	04.05.612.00
15	Wire Feed Ramp	---	---	04.05.611.00
16A	Speed Control, Rheostat	---	---	---
16B/C	Speed Control, Rheostat and Diode Assembly	---	---	02.13.338.00
17A	Indicator Light, Green	---	---	---
	Indicator Light, Red (not shown)	---	---	---
17B/C	Indicator Light, Green	---	---	02.19.150.00
	Indicator Light, Red (not shown)	---	---	---
18	Crumb Tray	---	---	R04.05.580.00
19A	Decal, Control	---	---	---
19B/C	Decal, Control	---	---	07.01.323.00
20A	Fan, Circulating	---	---	---
20B/C	Fan, Circulating	---	---	02.12.039.00
21A	Fan Guard	---	---	---
21B/C	Fan Guard	---	---	---
22	Cover, Cooling Fan	---	---	---
23	Discharge Chute	---	---	04.05.583.00
24	Shaft Assembly (Qty. 2)	---	---	04.05.610.00
25A	Rear Discharge Tray	---	---	---
25B/C	Rear Discharge Tray	---	---	04.05.584.00
26A	Discharge Vane	---	---	---
26B/C	Discharge Vane	---	---	04.05.582.00
27	Wire Belt ■	---	---	05.03.057.00
28	Sprocket, Conveyor	---	---	05.09.055.00
29	Drive Chain	---	---	05.03.049.00
30	Sprocket, Motor *	---	---	05.09.056.00
31	Gear Motor	---	---	02.12.096.00
32	Heating Element, Upper/Lower, 744 W (Qty. 2)	---	---	02.05.760.00
33	Heating Element, Lower, 600 W	---	---	---
34A	Reflector, Lower Element	---	---	---
34B/C	Reflector, Lower Element	---	---	04.05.613.00
35	Power Cord—NEMA 5-15 Plug	---	---	---
	Power Cord—No Plug	---	---	02.18.038.00
	Power Cord—BS 1363 Plug *	---	---	02.18.068.00
	Power Cord—Schuko Plug	---	---	02.18.038.00
	Wiring Diagram	---	---	10-01-356

‡ Toasters with a manufacturing date code of 1136 and newer ("C" numbers) use one of Item 12B for the bottom element along with one of Item 12C for the top element.

* Units equipped with the BS-1363 plug set use Motor Sprocket P/N 05.09.057.00 (14 tooth).

■ Toasters with a manufacturing date code of 0830 and older use wire belt P/N X05.03.041.00.

Parts Specific to Model TM-5H

Item	Description	100 V 50 Hz	120 V 60 Hz	220–240 V (CE) 50 Hz
12A	Bracket, Element (Qty. 2)	X04.05.449.00	X04.05.449.00	X04.05.449.00
12B	Bracket, Element (Qty. 2)	04.05.575.00	04.05.575.00	04.05.575.00
12C	Bracket, Element, Top ‡	04.05.750.00	04.05.750.00	04.05.750.00
13A	Top Cover w/Insulation	X04.05.435.00	X04.05.435.00	X04.05.435.00
13B/C	Top Cover w/Insulation	R04.05.562.00	R04.05.562.00	R04.05.562.00
14	Reflector, Upper Element	04.05.612.00	04.05.612.00	04.05.612.00
15	Wire Feed Ramp	04.05.611.00	04.05.611.00	04.05.611.00
16A	Speed Control, Rheostat	X02.13.331.00	---	X02.13.330.00
16B/C	Speed Control, Rheostat and Diode Assembly	02.13.339.00	---	02.13.338.00
17A	Indicator Light, Green	X02.19.185.00	---	X02.19.175.00
	Indicator Light, Red (not shown)	X02.19.184.00	X02.19.184.00	X02.19.176.00
17B/C	Indicator Light, Green	---	---	02.19.150.00
	Indicator Light, Red (not shown)	02.19.154.00	02.19.154.00	---
18	Crumb Tray	R04.05.580.00	R04.05.580.00	R04.05.580.00
19A	Decal, Control	---	---	---
19B/C	Decal, Control	07.01.323.00	07.01.323.00	07.01.323.00
20A	Fan, Circulating	X02.12.085.00	X02.12.085.00	X02.12.082.00
20B/C	Fan, Circulating	02.12.030.00	02.12.030.00	02.12.039.00
21A	Fan Guard	X02.12.084.00	X02.12.084.00	X02.12.084.00
21B/C	Fan Guard	---	---	---
22	Cover, Cooling Fan	---	---	---
23	Discharge Chute	04.05.583.00	04.05.583.00	04.05.583.00
24	Shaft Assembly (Qty. 2)	04.05.610.00	04.05.610.00	04.05.610.00
25A	Rear Discharge Tray, Slanted	X04.05.439.00	X04.05.439.00	X04.05.439.00
25B/C	Rear Discharge Tray, Slanted	04.05.584.00	04.05.584.00	04.05.584.00
25C	Rear Discharge Tray, Horizontal	04.05.906.00	04.05.906.00	04.05.906.00
26A	Discharge Vane	X04.05.440.00	X04.05.440.00	X04.05.440.00
26B/C	Discharge Vane	04.05.582.00	04.05.582.00	04.05.582.00
27	Wire Belt ■	05.03.057.00	05.03.057.00	05.03.057.00
28	Sprocket, Conveyor	05.09.055.00	05.09.055.00	05.09.055.00
29	Drive Chain †	05.03.049.00	05.03.049.00	05.03.049.00
30	Sprocket, Motor *	05.09.056.00	05.09.056.00	05.09.056.00
31	Gear Motor	02.12.081.00	02.12.081.00	02.12.096.00
32	Heating Element, Upper			
	770 W	02.05.860.00	---	---
	700 W	---	02.05.678.00	02.05.679.00
33	Heating Element, Lower			
	620 W	02.05.861.00	---	---
	600 W	---	02.05.681.00	02.05.682.00
34A	Reflector, Lower Element	X04.05.526.00	X04.05.526.00	X04.05.526.00
34B/C	Reflector, Lower Element	04.05.613.00	04.05.613.00	04.05.613.00
35	Power Cord—NEMA 5-15 Plug	R02.18.154.00	R02.18.154.00	---
	Power Cord—No Plug	---	---	02.18.038.00
	Power Cord—BS 1363 Plug *	---	---	02.18.068.00
	Power Cord—Schuko Plug	---	---	02.18.038.00
	Wiring Diagram	10-01-356	10-01-356	10-01-356

‡ Toasters with a manufacturing date code of 1136 and newer ("C" numbers) use only one of Item 12B for the bottom element along with one of Item 12C for the top element.

† Drive Chain P/N 05.03.040.00 is used on TM-5H models manufactured before year 2005, week thirty-eight.

* Units equipped with the BS-1363 plug set use Motor Sprocket P/N 05.09.057.00 (14 tooth).

■ Toasters with a manufacturing date code of 0830 and older use wire belt P/N X05.03.041.00.

Parts Specific to Model TM-10

Item	Description	100 V 50 Hz	120 V 60 Hz	220–240 V (CE) 50 Hz
12A	Bracket, Element (Qty. 2)	---	---	---
12B	Bracket, Element	---	---	04.05.575.00
12C	Bracket, Element, Top ‡	---	---	04.05.747.00
13A	Top Cover w/Insulation	---	---	---
13B/C	Top Cover w/Insulation	---	---	R04.05.619.00
14	Reflector, Upper Element	---	---	04.05.615.00
15	Wire Feed Ramp	---	---	04.05.640.00
16A	Speed Control, Rheostat	---	---	---
16B/C	Speed Control, Rheostat	---	---	02.13.338.00
17A	Indicator Light, Green	---	---	---
	Indicator Light, Red (not shown)	---	---	---
17B/C	Indicator Light, Green	---	---	02.19.150.00
	Indicator Light, Red (not shown)	---	---	---
18	Crumb Tray	---	---	R04.05.625.00
19A	Decal, Control	---	---	---
19B/C	Decal, Control	---	---	07.01.326.00
20A	Fan, Circulating	---	---	---
20B/C	Fan, Circulating	---	---	02.12.039.00
21	Fan Guard	---	---	---
22A	Cover, Cooling Fan	---	---	---
22B/C	Cover, Cooling Fan	---	---	---
23	Discharge Chute	---	---	04.05.628.00
24	Shaft Assembly (Qty. 2)	---	---	04.05.386.00
25A	Rear Discharge Tray	---	---	---
25B/C	Rear Discharge Tray	---	---	04.05.629.00
26A	Discharge Vane	---	---	---
26B/C	Discharge Vane	---	---	04.05.627.00
27	Wire Belt ♦	---	---	05.03.036.00
28	Sprocket, Conveyor	---	---	05.09.055.00
29	Drive Chain	---	---	05.03.049.00
30	Sprocket, Motor *	---	---	05.09.056.00
31	Gear Motor	---	---	02.12.096.00
32A/B	Heating Element, Upper, 1000 W	---	---	---
	Heating Element, Upper, 1000 W	---	---	---
32C	Heating Element, Upper/Lower, 1130 W (Qty. 2)	---	---	02.05.761.00
33A/B	Heating Element, Lower, 750 W	---	---	---
	Heating Element, Lower, 900 W	---	---	---
34A	Reflector, Lower Element	---	---	---
34B/C	Reflector, Lower Element	---	---	04.05.616.00
35	Power Cord—NEMA 5-15 Plug	---	---	---
	Power Cord—No Plug	---	---	02.18.038.00
	Power Cord—BS 1363 Plug *	---	---	02.18.068.00
	Power Cord—Schuko Plug	---	---	02.18.038.00
	Wiring Diagram	---	---	10-01-356

‡ Toasters with a manufacturing date code of 1136 and newer ("C" numbers) use one of Item 12B for the bottom element along with one of Item 12C for the top element.

* Units equipped with the BS-1363 plug set use Motor Sprocket P/N 05.09.057.00 (14 tooth).

♦ Toasters with a manufacturing date code of 0830 and older use wire belt P/N X05.03.042.00.

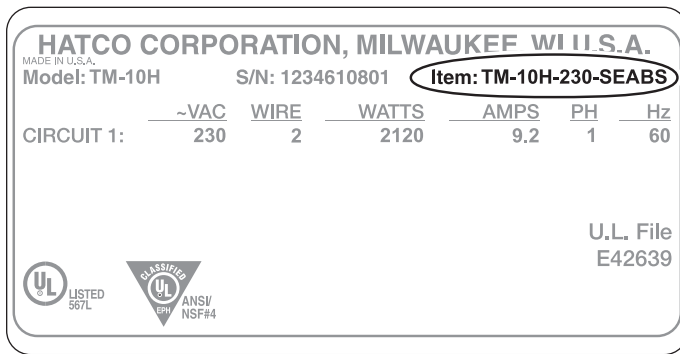
IMPORTANT! — HOW TO USE THIS SECTION

This section of the Replacement Parts List includes part numbers for different versions/revisions of the TM-10H Model Toaster. Each of these versions were given a specific **Item** number—"TM-10H" or "TM-10H-230-SEABS". The **Item** number is printed on the top, right side of the specification label. The specification label is located on the bottom of the unit (see example on next page). To find the correct replacement parts for a TM-10H Model Toaster, locate the specific **Item** number and refer to the appropriate table on Page 6 or 7.

Part numbers of "---" indicate the item is not available for the designated unit.

Parts Specific to Model TM-10H

Item	Description	100 V 50 Hz	120 V 60 Hz	200 V 60 Hz	220–240 V (CE) 50 Hz
12A	Bracket, Element (Qty. 2)	---	X04.05.449.00	X04.05.449.00	X04.05.449.00
12B	Bracket, Element (Qty. 2)	---	04.05.575.00	04.05.575.00	04.05.575.00
12C	Bracket, Element, Top ‡	---	04.05.750.00	04.05.750.00	04.05.750.00
13A	Top Cover w/Insulation	---	X04.05.434.00	X04.05.434.00	X04.05.434.00
13B/C	Top Cover w/Insulation	---	R04.05.619.00	R04.05.619.00	R04.05.619.00
14	Reflector, Upper Element	---	04.05.615.00	04.05.615.00	04.05.615.00
15	Wire Feed Ramp	---	04.05.640.00	04.05.640.00	04.05.640.00
16A	Speed Control, Rheostat	---	X02.13.331.00	X02.13.330.00	X02.13.330.00
16B/C	Speed Control, Rheostat	---	02.13.339.00	02.13.338.00	02.13.338.00
17A	Indicator Light, Green	---	X02.19.185.00	X02.19.175.00	X02.19.175.00
	Indicator Light, Red (not shown)	---	X02.19.184.00	X02.19.176.00	X02.19.176.00
17B/C	Indicator Light, Green	---	---	02.19.150.00	02.19.150.00
	Indicator Light, Red (not shown)	---	02.19.154.00	---	---
18	Crumb Tray	---	R04.05.625.00	R04.05.625.00	R04.05.625.00
19A	Decal, Control	---	X07.03.466.00	X07.03.466.00	X07.03.466.00
19B/C	Decal, Control	---	07.01.326.00	07.01.326.00	07.01.326.00
20A	Fan, Circulating	---	X02.12.085.00	X02.12.082.00	X02.12.082.00
20B/C	Fan, Circulating	---	02.12.030.00	02.12.039.00	02.12.039.00
21	Fan Guard	---	---	---	---
22A	Cover, Cooling Fan	---	X04.05.446.00	X04.05.446.00	X04.05.446.00
22B/C	Cover, Cooling Fan	---	---	---	---
23	Discharge Chute	---	04.05.628.00	04.05.628.00	04.05.628.00
24	Shaft Assembly (Qty. 2)	---	04.05.386.00	04.05.386.00	04.05.386.00
25A	Rear Discharge Tray	---	X04.05.438.00	X04.05.438.00	X04.05.438.00
25B/C	Rear Discharge Tray	---	04.05.629.00	04.05.629.00	04.05.629.00
26A	Discharge Vane	---	X04.05.441.00	X04.05.441.00	X04.05.441.00
26B/C	Discharge Vane	---	04.05.627.00	04.05.627.00	04.05.627.00
27	Wire Belt ♦	---	05.03.036.00	05.03.036.00	05.03.036.00
28	Sprocket, Conveyor	---	05.09.055.00	05.09.055.00	05.09.055.00
29	Drive Chain †	---	05.03.049.00	05.03.049.00	05.03.049.00
30	Sprocket, Motor *	---	05.09.056.00	05.09.056.00	05.09.056.00
31	Gear Motor	---	02.12.081.00	02.12.096.00	02.12.096.00
32A/B	Heating Element, Upper, 1000 W	---	02.05.675.00	---	---
	Heating Element, Upper, 1000 W	---	---	---	02.05.642.00
32C	Heating Element, Upper, 1210 W	---	---	02.05.1167.00	02.05.765.00
33A/B	Heating Element, Lower, 750 W	---	02.05.676.00	---	---
	Heating Element, Lower, 900 W	---	---	---	02.05.674.00
33C	Heating Element, Lower, 880 W	---	---	02.05.1168.00	02.05.766.00
34A	Reflector, Lower Element	---	X04.05.528.00	X04.05.528.00	X04.05.528.00
34B/C	Reflector, Lower Element	---	04.05.616.00	04.05.616.00	04.05.616.00
35	Power Cord—NEMA 5-15 Plug	---	R02.18.154.00	---	---
	Power Cord—No Plug	---	---	02.18.571.00	02.18.571.00
	Power Cord—CCC	---	---	---	02.18.1053.00
	Power Cord—PSE	---	---	02.18.1340.00	---
	Power Cord—AS 3112	---	---	---	02.18.1004.00
	Power Cord—BS 1363 Plug*	---	---	---	02.18.068.00
	Power Cord—Schuko Plug	---	---	---	02.18.038.00
	Wiring Diagram	---	10-01-356	10-01-356	10-01-356



Example of a TM-10H-230-SEABS Specification Label

Parts Specific to Model TM-10H-230-SEABS

Item	Description	100 V 50 Hz	120 V 60 Hz	230 V (CE) 50 Hz
12	Bracket, Element, Top	---	---	04.05.750.00
13	Top Cover w/Insulation	---	---	R04.05.619.00
14	Reflector, Upper Element	---	---	04.05.615.00
15	Wire Feed Ramp	---	---	04.05.640.00
16	Speed Control, Rheostat	---	---	02.13.338.00
17	Indicator Light, Green	---	---	02.19.150.00
	Indicator Light, Red (not shown)	---	---	---
18	Crumb Tray	---	---	R04.05.625.00
19	Decal, Control	---	---	07.01.326.00
20	Fan, Circulating	---	---	02.12.039.00
21	Fan Guard	---	---	---
22	Cover, Cooling Fan	---	---	---
23	Discharge Chute	---	---	04.05.628.00
24	Shaft Assembly (Qty. 2)	---	---	04.05.386.00
25	Rear Discharge Tray	---	---	04.05.629.00
26	Discharge Vane	---	---	04.05.627.00
27	Wire Belt	---	---	05.03.036.00
28	Sprocket, Conveyor	---	---	05.09.055.00
29	Drive Chain	---	---	05.03.077.00
30	Sprocket, Motor *	---	---	05.09.066.00
31	Gear Motor	---	---	02.12.096.00
32	Heating Element, Upper, 1100 W	---	---	02.05.765.00
33	Heating Element, Lower, 800 W	---	---	02.05.766.00
34	Reflector, Lower Element	---	---	04.05.616.00
35	Power Cord—NEMA 5-15 Plug	---	---	---
	Power Cord—No Plug	---	---	02.18.571.00
	Power Cord—BS 1363 Plug *	---	---	02.18.068.00
	Power Cord—Schuko Plug	---	---	---
	Wiring Diagram	---	---	10-01-356

‡ Toasters with a manufacturing date code of 1136 and newer ("C" numbers) use only one of Item 12B for the bottom element along with one of Item 12C for the top element.

† Drive Chain P/N 05.03.044.00 is used on TM-10H models manufactured before year 2005, week thirty-eight.

* Units equipped with the BS-1363 plug set use Motor Sprocket P/N 05.09.057.00 (14 tooth).

♦ Toasters with a manufacturing date code of 0830 and older use wire belt P/N X05.03.042.00.



HATCO CORPORATION
P.O. Box 340500
Milwaukee, WI 53234-0500 U.S.A.
414-671-6350
partsandservice@hatcocorp.com
www.hatcocorp.com



HATCO CORPORATION
ASIA HEADQUARTERS
Unit 101, Premier Center, 20 Cheung Shun Street
Cheung Sha Wan, Kowloon, H.K.
Telephone (852) 2991-4121
hongkong@hatcocorp.com